

LEVER

AISI 303 stainless steel, sand-blasted matte finish.

HANDLE

Type PLX. (see page 386) Phenolic based (PF) Duroplast, black colour, glossy finish.

WASHER

AISI 630 hardened stainless steel.

HELICAL CAM

Nickel-plated AISI 303 stainless steel.

REFERENCE BUSHING (EXECUTIONS GN 918.6-KVS, GN 918.6-GVS, GN 918.6-SKS)
Hardened stainless steel.

THREADED BUSHING (EXECUTIONS GN 918.6-KVB, GN 918.6-GVB, GN 918.6-SKB)
Hardened stainless steel.

STANDARD EXECUTIONS

AISI 630 hardened stainless steel threaded pin:

- **GN 918.6-KV**: with angled lever
- **GN 918.6-GV**: with straight lever.
- **GN 918.6-SK**: with hexagon.

AISI 304 stainless steel cylindrical head screw on the operator side:

- **GN 918.6-KVS**: with angled lever
- **GN 918.6-GVS**: with straight lever.
- **GN 918.6-SKS**: with hexagon.

AISI 304 stainless steel cylindrical head screw on the rear side:

- **GN 918.6-KVB**: with angled lever
- **GN 918.6-GVB**: with straight lever.
- **GN 918.6-SKB**: with hexagon.

Suffix for the direction of the locking action:

- **L**: anticlockwise locking action.
- **R**: clockwise locking action (version shown in the drawings).

FEATURES AND APPLICATIONS

The GN 918.6 cam levers enable the achievement of high locking grades with fast and safe locking-unlocking movements.

The system is self-locking at any angular positioning.

The lever is connected to the cam by means of a toothed element providing precise positioning while releasing the screw.

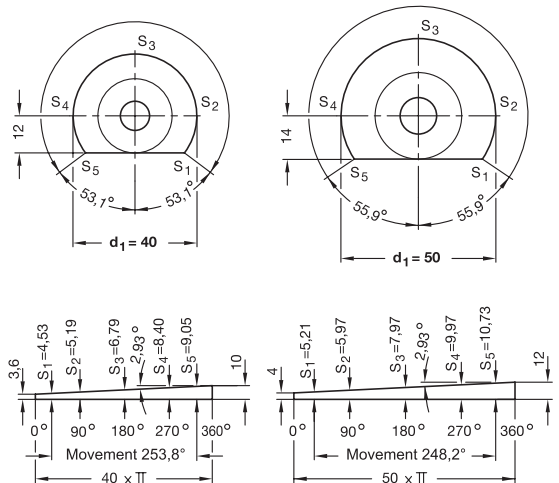
The washer eliminates the need for expensive items with female threadings and therefore the screw can be used directly on T-nuts for connection plates.

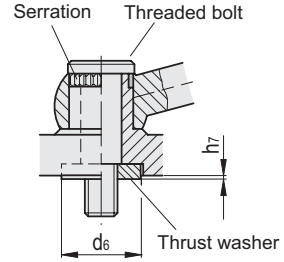


GN 918.6 L/R

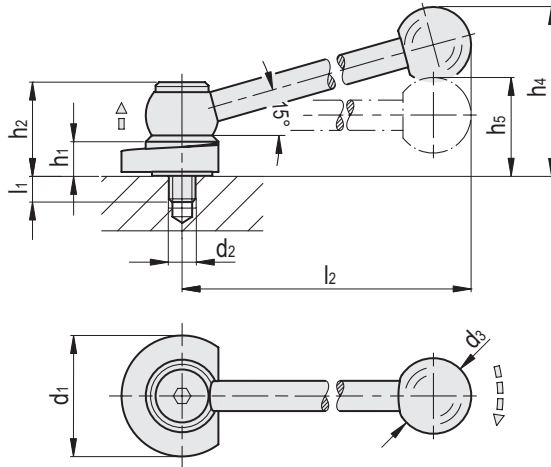
Movement 253,8°

Movement 248,2°

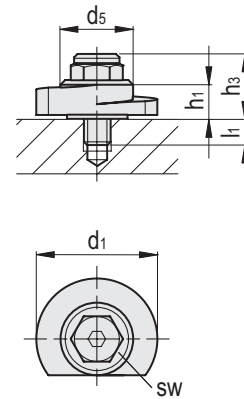




GN 918.6-KV
GN 918.6-GV



GN 918.6-SK



Conversion Table 1 mm = 0.039 inch	
d3 - d1	
mm	inch
25	0.98
30	1.17
40	1.56
50	1.95

GN 918.6-KV

INOX STAINLESS STEEL METRIC

Code	Description	d3	d1 -0.5	d2	d5	d6	l1	l2	h1	h2	h4	h5	h6	h7	⚖
GN.31835	GN 918.6-40-KV-L	25	40	M8	24	20	8	100	10	31	55	31	3.6	0.2	178
GN.31836	GN 918.6-40-KV-R	25	40	M8	24	20	8	100	10	31	55	31	3.6	0.2	178
GN.31840	GN 918.6-50-KV-L	30	50	M10	28	24	11	116	12	35	62	36	4	0.2	310
GN.31841	GN 918.6-50-KV-R	30	50	M10	28	24	11	116	12	35	62	36	4	0.2	310

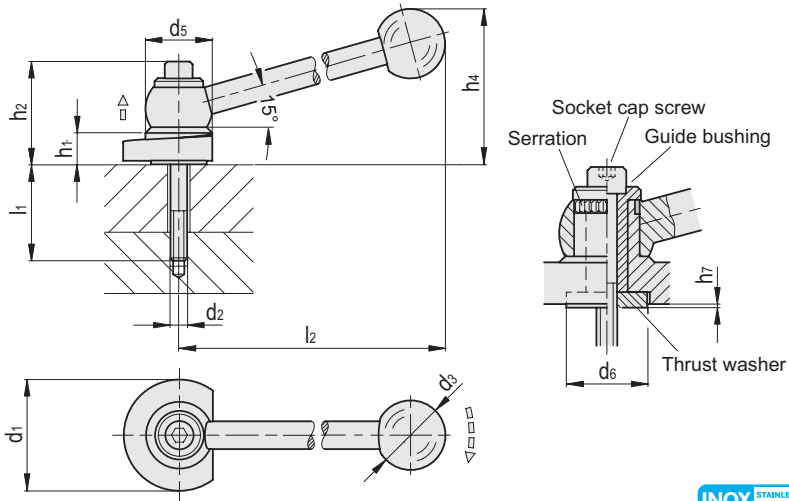
GN 918.6-GV

Code	Description	d3	d1 -0.5	d2	d5	d6	l1	l2	h1	h2	h5	h6	h7	⚖
GN.83631	GN 918.6-40-GV-L	25	40	M8	24	20	8	100	10	31	31	3.6	0.2	177
GN.83651	GN 918.6-40-GV-R	25	40	M8	24	20	8	100	10	31	31	3.6	0.2	177
GN.83871	GN 918.6-50-GV-L	30	50	M10	28	24	11	116	12	35	36	4	0.2	307
GN.83891	GN 918.6-50-GV-R	30	50	M10	28	24	11	116	12	35	36	4	0.2	307

GN 918.6-SK

Code	Description	d1 -0.5	d2	d5	d6	l1	h1	h3	h6	h7	⚖
GN.83791	GN 918.6-40-SK-L	40	M8	24	20	8	10	21.5	3.6	0.2	87
GN.83811	GN 918.6-40-SK-R	40	M8	24	20	8	10	21.5	3.6	0.2	87
GN.84021	GN 918.6-50-SK-L	50	M10	28	24	11	12	24.5	4	0.2	154
GN.84041	GN 918.6-50-SK-R	50	M10	28	24	11	12	24.5	4	0.2	154

- 1
- 2
- 3
- 4
- 5
- 6
- 7
- 8
- 9
- 10
- 11
- 12
- 13
- 14
- 15
- 16
- 17
- 18
- 19



Conversion Table
1 mm = 0,039 inch

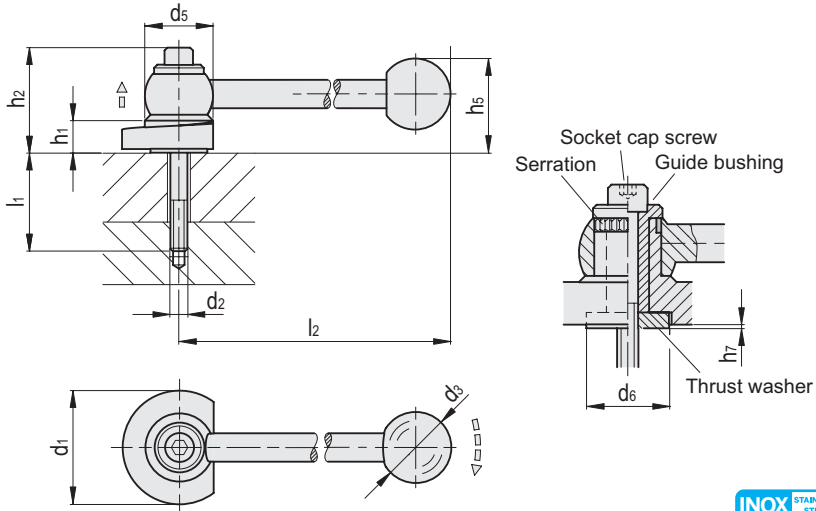
d3 - d1	
mm	inch
25	0.98
30	1.17
40	1.56
50	1.95

GN 918.6-KVS

INOX STAINLESS STEEL **METRIC**

Code	Description	d3	d1 -0.5	d2	d5	d6	l1	l2	h1	h2	h4	h5	h7	⚖
GN.83751	GN 918.6-40-KVS-L-10	25	40	M6	24	20	10	100	10	36	55	31	0.2	155
GN.83752	GN 918.6-40-KVS-L-15	25	40	M6	24	20	15	100	10	36	55	31	0.2	156
GN.83753	GN 918.6-40-KVS-L-20	25	40	M6	24	20	20	100	10	36	55	31	0.2	157
GN.83754	GN 918.6-40-KVS-L-25	25	40	M6	24	20	25	100	10	36	55	31	0.2	158
GN.83755	GN 918.6-40-KVS-L-30	25	40	M6	24	20	30	100	10	36	55	31	0.2	159
GN.83756	GN 918.6-40-KVS-L-40	25	40	M6	24	20	40	100	10	36	55	31	0.2	161
GN.83757	GN 918.6-40-KVS-L-45	25	40	M6	24	20	45	100	10	36	55	31	0.2	161
GN.83758	GN 918.6-40-KVS-L-50	25	40	M6	24	20	50	100	10	36	55	31	0.2	162
GN.83759	GN 918.6-40-KVS-L-60	25	40	M6	24	20	60	100	10	36	55	31	0.2	164
GN.83760	GN 918.6-40-KVS-L-65	25	40	M6	24	20	65	100	10	36	55	31	0.2	166
GN.83761	GN 918.6-40-KVS-L-70	25	40	M6	24	20	70	100	10	36	55	31	0.2	168
GN.83762	GN 918.6-40-KVS-L-80	25	40	M6	24	20	80	100	10	36	55	31	0.2	170
GN.83763	GN 918.6-40-KVS-L-90	25	40	M6	24	20	90	100	10	36	55	31	0.2	172
GN.83771	GN 918.6-40-KVS-R-10	25	40	M6	24	20	10	100	10	36	55	31	0.2	155
GN.83772	GN 918.6-40-KVS-R-15	25	40	M6	24	20	15	100	10	36	55	31	0.2	156
GN.83773	GN 918.6-40-KVS-R-20	25	40	M6	24	20	20	100	10	36	55	31	0.2	157
GN.83774	GN 918.6-40-KVS-R-25	25	40	M6	24	20	25	100	10	36	55	31	0.2	158
GN.83775	GN 918.6-40-KVS-R-30	25	40	M6	24	20	30	100	10	36	55	31	0.2	159
GN.83776	GN 918.6-40-KVS-R-40	25	40	M6	24	20	40	100	10	36	55	31	0.2	161
GN.83777	GN 918.6-40-KVS-R-45	25	40	M6	24	20	45	100	10	36	55	31	0.2	161
GN.83778	GN 918.6-40-KVS-R-50	25	40	M6	24	20	50	100	10	36	55	31	0.2	162
GN.83779	GN 918.6-40-KVS-R-60	25	40	M6	24	20	60	100	10	36	55	31	0.2	164
GN.83780	GN 918.6-40-KVS-R-65	25	40	M6	24	20	65	100	10	36	55	31	0.2	166
GN.83781	GN 918.6-40-KVS-R-70	25	40	M6	24	20	70	100	10	36	55	31	0.2	168
GN.83782	GN 918.6-40-KVS-R-80	25	40	M6	24	20	80	100	10	36	55	31	0.2	170
GN.83783	GN 918.6-40-KVS-R-90	25	40	M6	24	20	90	100	10	36	55	31	0.2	172
GN.83991	GN 918.6-50-KVS-L-12	30	50	M8	28	24	12	116	12	41	62	36	0.2	259
GN.83992	GN 918.6-50-KVS-L-22	30	50	M8	28	24	22	116	12	41	62	36	0.2	263
GN.83993	GN 918.6-50-KVS-L-32	30	50	M8	28	24	32	116	12	41	62	36	0.2	267
GN.83994	GN 918.6-50-KVS-L-42	30	50	M8	28	24	42	116	12	41	62	36	0.2	270
GN.83995	GN 918.6-50-KVS-L-52	30	50	M8	28	24	52	116	12	41	62	36	0.2	275
GN.83996	GN 918.6-50-KVS-L-62	30	50	M8	28	24	62	116	12	41	62	36	0.2	278
GN.83997	GN 918.6-50-KVS-L-72	30	50	M8	28	24	72	116	12	41	62	36	0.2	282
GN.83998	GN 918.6-50-KVS-L-82	30	50	M8	28	24	82	116	12	41	62	36	0.2	286
GN.83999	GN 918.6-50-KVS-L-92	30	50	M8	28	24	92	116	12	41	62	36	0.2	288
GN.84000	GN 918.6-50-KVS-L-102	30	50	M8	28	24	102	116	12	41	62	36	0.2	286
GN.84001	GN 918.6-50-KVS-L-112	30	50	M8	28	24	112	116	12	41	62	36	0.2	295
GN.84006	GN 918.6-50-KVS-R-12	30	50	M8	28	24	12	116	12	41	62	36	0.2	259
GN.84007	GN 918.6-50-KVS-R-22	30	50	M8	28	24	22	116	12	41	62	36	0.2	263
GN.84008	GN 918.6-50-KVS-R-32	30	50	M8	28	24	32	116	12	41	62	36	0.2	267
GN.84009	GN 918.6-50-KVS-R-42	30	50	M8	28	24	42	116	12	41	62	36	0.2	270
GN.84010	GN 918.6-50-KVS-R-52	30	50	M8	28	24	52	116	12	41	62	36	0.2	275
GN.84011	GN 918.6-50-KVS-R-62	30	50	M8	28	24	62	116	12	41	62	36	0.2	278
GN.84012	GN 918.6-50-KVS-R-72	30	50	M8	28	24	72	116	12	41	62	36	0.2	282
GN.84013	GN 918.6-50-KVS-R-82	30	50	M8	28	24	82	116	12	41	62	36	0.2	286
GN.84014	GN 918.6-50-KVS-R-92	30	50	M8	28	24	92	116	12	41	62	36	0.2	288
GN.84015	GN 918.6-50-KVS-R-102	30	50	M8	28	24	102	116	12	41	62	36	0.2	286
GN.84016	GN 918.6-50-KVS-R-112	30	50	M8	28	24	112	116	12	41	62	36	0.2	295

Standard machine parts



Conversion Table 1 mm = 0.039 inch	
d3 - d1	
mm	inch
25	0.98
30	1.17
40	1.56
50	1.95

GN 918.6-GVS

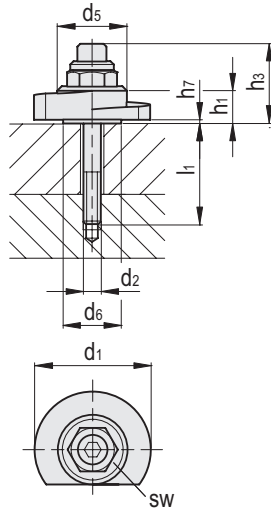
INOX STAINLESS STEEL METRIC

Code	Description	d3	d1-0.5	d2	d5	d6	l1	l2	h1	h2	h5	h7	⚖
GN.83671	GN 918.6-40-GVS-L-10	25	40	M6	24	20	10	100	10	36	31	0.2	153
GN.83672	GN 918.6-40-GVS-L-15	25	40	M6	24	20	15	100	10	36	31	0.2	154
GN.83673	GN 918.6-40-GVS-L-20	25	40	M6	24	20	20	100	10	36	31	0.2	155
GN.83674	GN 918.6-40-GVS-L-25	25	40	M6	24	20	25	100	10	36	31	0.2	156
GN.83675	GN 918.6-40-GVS-L-30	25	40	M6	24	20	30	100	10	36	31	0.2	157
GN.83676	GN 918.6-40-GVS-L-40	25	40	M6	24	20	40	100	10	36	31	0.2	159
GN.83677	GN 918.6-40-GVS-L-45	25	40	M6	24	20	45	100	10	36	31	0.2	159
GN.83678	GN 918.6-40-GVS-L-50	25	40	M6	24	20	50	100	10	36	31	0.2	160
GN.83679	GN 918.6-40-GVS-L-60	25	40	M6	24	20	60	100	10	36	31	0.2	162
GN.83680	GN 918.6-40-GVS-L-65	25	40	M6	24	20	65	100	10	36	31	0.2	164
GN.83681	GN 918.6-40-GVS-L-70	25	40	M6	24	20	70	100	10	36	31	0.2	166
GN.83682	GN 918.6-40-GVS-L-80	25	40	M6	24	20	80	100	10	36	31	0.2	167
GN.83683	GN 918.6-40-GVS-L-90	25	40	M6	24	20	90	100	10	36	31	0.2	170
GN.83691	GN 918.6-40-GVS-R-10	25	40	M6	24	20	10	100	10	36	31	0.2	153
GN.83692	GN 918.6-40-GVS-R-15	25	40	M6	24	20	15	100	10	36	31	0.2	154
GN.83693	GN 918.6-40-GVS-R-20	25	40	M6	24	20	20	100	10	36	31	0.2	155
GN.83694	GN 918.6-40-GVS-R-25	25	40	M6	24	20	25	100	10	36	31	0.2	156
GN.83695	GN 918.6-40-GVS-R-30	25	40	M6	24	20	30	100	10	36	31	0.2	157
GN.83696	GN 918.6-40-GVS-R-40	25	40	M6	24	20	40	100	10	36	31	0.2	159
GN.83697	GN 918.6-40-GVS-R-45	25	40	M6	24	20	45	100	10	36	31	0.2	159
GN.83698	GN 918.6-40-GVS-R-50	25	40	M6	24	20	50	100	10	36	31	0.2	160
GN.83699	GN 918.6-40-GVS-R-60	25	40	M6	24	20	60	100	10	36	31	0.2	162
GN.83700	GN 918.6-40-GVS-R-65	25	40	M6	24	20	65	100	10	36	31	0.2	164
GN.83701	GN 918.6-40-GVS-R-70	25	40	M6	24	20	70	100	10	36	31	0.2	166
GN.83702	GN 918.6-40-GVS-R-80	25	40	M6	24	20	80	100	10	36	31	0.2	167
GN.83703	GN 918.6-40-GVS-R-90	25	40	M6	24	20	90	100	10	36	31	0.2	170
GN.83911	GN 918.6-50-GVS-L-12	30	50	M8	28	24	12	116	12	41	36	0.2	275
GN.83912	GN 918.6-50-GVS-L-22	30	50	M8	28	24	22	116	12	41	36	0.2	279
GN.83913	GN 918.6-50-GVS-L-32	30	50	M8	28	24	32	116	12	41	36	0.2	283
GN.83914	GN 918.6-50-GVS-L-42	30	50	M8	28	24	42	116	12	41	36	0.2	286
GN.83915	GN 918.6-50-GVS-L-52	30	50	M8	28	24	52	116	12	41	36	0.2	291
GN.83916	GN 918.6-50-GVS-L-62	30	50	M8	28	24	62	116	12	41	36	0.2	294
GN.83917	GN 918.6-50-GVS-L-72	30	50	M8	28	24	72	116	12	41	36	0.2	298
GN.83918	GN 918.6-50-GVS-L-82	30	50	M8	28	24	82	116	12	41	36	0.2	302
GN.83919	GN 918.6-50-GVS-L-92	30	50	M8	28	24	92	116	12	41	36	0.2	304
GN.83920	GN 918.6-50-GVS-L-102	30	50	M8	28	24	102	116	12	41	36	0.2	302
GN.83921	GN 918.6-50-GVS-L-112	30	50	M8	28	24	112	116	12	41	36	0.2	311
GN.83931	GN 918.6-50-GVS-R-12	30	50	M8	28	24	12	116	12	41	36	0.2	275
GN.83932	GN 918.6-50-GVS-R-22	30	50	M8	28	24	22	116	12	41	36	0.2	279
GN.83933	GN 918.6-50-GVS-R-32	30	50	M8	28	24	32	116	12	41	36	0.2	283
GN.83934	GN 918.6-50-GVS-R-42	30	50	M8	28	24	42	116	12	41	36	0.2	286
GN.83935	GN 918.6-50-GVS-R-52	30	50	M8	28	24	52	116	12	41	36	0.2	291
GN.83936	GN 918.6-50-GVS-R-62	30	50	M8	28	24	62	116	12	41	36	0.2	294
GN.83937	GN 918.6-50-GVS-R-72	30	50	M8	28	24	72	116	12	41	36	0.2	298
GN.83938	GN 918.6-50-GVS-R-82	30	50	M8	28	24	82	116	12	41	36	0.2	302
GN.83939	GN 918.6-50-GVS-R-92	30	50	M8	28	24	92	116	12	41	36	0.2	304
GN.83940	GN 918.6-50-GVS-R-102	30	50	M8	28	24	102	116	12	41	36	0.2	302
GN.83941	GN 918.6-50-GVS-R-112	30	50	M8	28	24	112	116	12	41	36	0.2	311



Standard machine parts

- 1
- 2
- 3
- 4
- 5
- 6
- 7
- 8
- 9
- 10
- 11
- 12
- 13
- 14
- 15
- 16
- 17
- 18
- 19



Conversion Table
1 mm = 0,039 inch

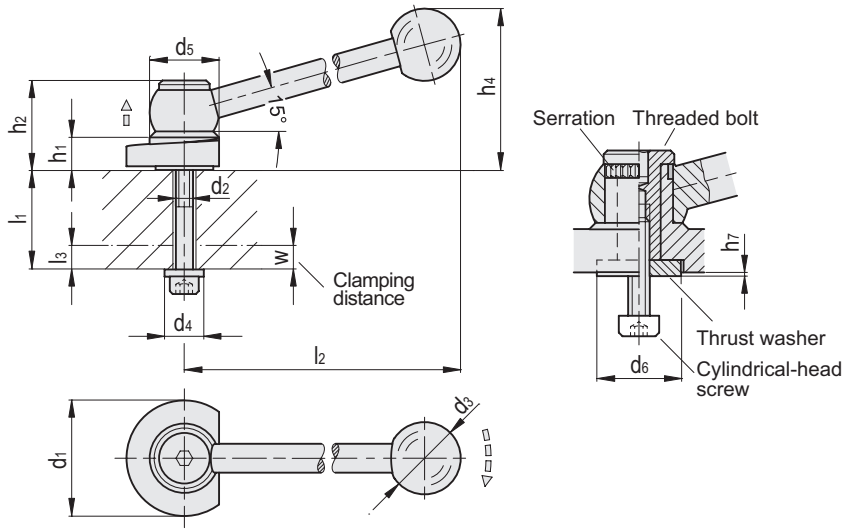
d3 - d1	
mm	inch
25	0.98
30	1.17
40	1.56
50	1.95

GN 918.6-SKS

INOX STAINLESS STEEL METRIC

Code	Description	d1 -0.5	d2	d5	d6	l1	h1	h3	h7	sw	
GN.83831	GN 918.6-40-SKS-L-15	40	M6	24	20	15	10	26	0.2	15	71
GN.83832	GN 918.6-40-SKS-L-20	40	M6	24	20	20	10	26	0.2	15	72
GN.83833	GN 918.6-40-SKS-L-25	40	M6	24	20	25	10	26	0.2	15	73
GN.83834	GN 918.6-40-SKS-L-30	40	M6	24	20	30	10	26	0.2	15	74
GN.83835	GN 918.6-40-SKS-L-35	40	M6	24	20	35	10	26	0.2	15	75
GN.83836	GN 918.6-40-SKS-L-40	40	M6	24	20	40	10	26	0.2	15	77
GN.83837	GN 918.6-40-SKS-L-50	40	M6	24	20	50	10	26	0.2	15	77
GN.83838	GN 918.6-40-SKS-L-55	40	M6	24	20	55	10	26	0.2	15	78
GN.83839	GN 918.6-40-SKS-L-60	40	M6	24	20	60	10	26	0.2	15	80
GN.83840	GN 918.6-40-SKS-L-70	40	M6	24	20	70	10	26	0.2	15	82
GN.83841	GN 918.6-40-SKS-L-75	40	M6	24	20	75	10	26	0.2	15	84
GN.83842	GN 918.6-40-SKS-L-80	40	M6	24	20	80	10	26	0.2	15	86
GN.83843	GN 918.6-40-SKS-L-90	40	M6	24	20	90	10	26	0.2	15	88
GN.83851	GN 918.6-40-SKS-R-15	40	M6	24	20	15	10	26	0.2	15	71
GN.83852	GN 918.6-40-SKS-R-20	40	M6	24	20	20	10	26	0.2	15	72
GN.83853	GN 918.6-40-SKS-R-25	40	M6	24	20	25	10	26	0.2	15	73
GN.83854	GN 918.6-40-SKS-R-30	40	M6	24	20	30	10	26	0.2	15	74
GN.83855	GN 918.6-40-SKS-R-35	40	M6	24	20	35	10	26	0.2	15	75
GN.83856	GN 918.6-40-SKS-R-40	40	M6	24	20	40	10	26	0.2	15	77
GN.83857	GN 918.6-40-SKS-R-50	40	M6	24	20	50	10	26	0.2	15	77
GN.83858	GN 918.6-40-SKS-R-55	40	M6	24	20	55	10	26	0.2	15	78
GN.83859	GN 918.6-40-SKS-R-60	40	M6	24	20	60	10	26	0.2	15	80
GN.83860	GN 918.6-40-SKS-R-70	40	M6	24	20	70	10	26	0.2	15	82
GN.83861	GN 918.6-40-SKS-R-75	40	M6	24	20	75	10	26	0.2	15	84
GN.83862	GN 918.6-40-SKS-R-80	40	M6	24	20	80	10	26	0.2	15	86
GN.83863	GN 918.6-40-SKS-R-90	40	M6	24	20	90	10	26	0.2	15	88
GN.84061	GN 918.6-50-SKS-L-12	50	M8	28	24	12	12	31	0.2	19	135
GN.84062	GN 918.6-50-SKS-L-22	50	M8	28	24	22	12	31	0.2	19	139
GN.84063	GN 918.6-50-SKS-L-32	50	M8	28	24	32	12	31	0.2	19	143
GN.84064	GN 918.6-50-SKS-L-42	50	M8	28	24	42	12	31	0.2	19	146
GN.84065	GN 918.6-50-SKS-L-52	50	M8	28	24	52	12	31	0.2	19	151
GN.84066	GN 918.6-50-SKS-L-62	50	M8	28	24	62	12	31	0.2	19	154
GN.84067	GN 918.6-50-SKS-L-72	50	M8	28	24	72	12	31	0.2	19	158
GN.84068	GN 918.6-50-SKS-L-82	50	M8	28	24	82	12	31	0.2	19	162
GN.84069	GN 918.6-50-SKS-L-92	50	M8	28	24	92	12	31	0.2	19	164
GN.84070	GN 918.6-50-SKS-L-102	50	M8	28	24	102	12	31	0.2	19	162
GN.84071	GN 918.6-50-SKS-L-112	50	M8	28	24	112	12	31	0.2	19	171
GN.84076	GN 918.6-50-SKS-R-12	50	M8	28	24	12	12	31	0.2	19	135
GN.84077	GN 918.6-50-SKS-R-22	50	M8	28	24	22	12	31	0.2	19	139
GN.84078	GN 918.6-50-SKS-R-32	50	M8	28	24	32	12	31	0.2	19	143
GN.84079	GN 918.6-50-SKS-R-42	50	M8	28	24	42	12	31	0.2	19	146
GN.84080	GN 918.6-50-SKS-R-52	50	M8	28	24	52	12	31	0.2	19	151
GN.84081	GN 918.6-50-SKS-R-62	50	M8	28	24	62	12	31	0.2	19	154
GN.84082	GN 918.6-50-SKS-R-72	50	M8	28	24	72	12	31	0.2	19	158
GN.84083	GN 918.6-50-SKS-R-82	50	M8	28	24	82	12	31	0.2	19	162
GN.84084	GN 918.6-50-SKS-R-92	50	M8	28	24	92	12	31	0.2	19	164
GN.84085	GN 918.6-50-SKS-R-102	50	M8	28	24	102	12	31	0.2	19	162
GN.84086	GN 918.6-50-SKS-R-112	50	M8	28	24	112	12	31	0.2	19	171

Standard machine parts



Conversion Table
1 mm = 0.039 inch

d3 - d1	
mm	inch
25	0.98
30	1.17
40	1.56
50	1.95

GN 918.6-KVB

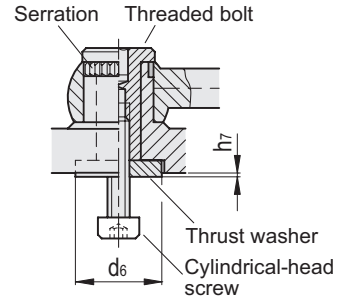
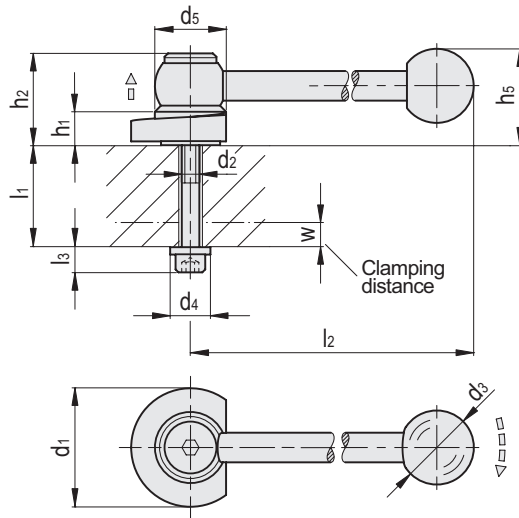
INOX STAINLESS STEEL METRIC

Code	Description	d3	d1 -0.5	d2	d4	d5	d6	l1 max	l2	l3	h1	h2	h4	h5	h7	wmax	△
GN.83711	GN 918.6-40-KVB-L-12	25	40	M6	12	24	20	12	100	8.5	10	30.5	55	31	0.2	5	152
GN.83712	GN 918.6-40-KVB-L-22	25	40	M6	12	24	20	22	100	8.5	10	30.5	55	31	0.2	5	154
GN.83713	GN 918.6-40-KVB-L-27	25	40	M6	12	24	20	27	100	8.5	10	30.5	55	31	0.2	5	155
GN.83714	GN 918.6-40-KVB-L-32	25	40	M6	12	24	20	32	100	8.5	10	30.5	55	31	0.2	5	156
GN.83715	GN 918.6-40-KVB-L-37	25	40	M6	12	24	20	37	100	8.5	10	30.5	55	31	0.2	5	157
GN.83716	GN 918.6-40-KVB-L-42	25	40	M6	12	24	20	42	100	8.5	10	30.5	55	31	0.2	5	158
GN.83717	GN 918.6-40-KVB-L-47	25	40	M6	12	24	20	47	100	8.5	10	30.5	55	31	0.2	5	159
GN.83718	GN 918.6-40-KVB-L-57	25	40	M6	12	24	20	57	100	8.5	10	30.5	55	31	0.2	5	161
GN.83719	GN 918.6-40-KVB-L-62	25	40	M6	12	24	20	62	100	8.5	10	30.5	55	31	0.2	5	161
GN.83720	GN 918.6-40-KVB-L-67	25	40	M6	12	24	20	67	100	8.5	10	30.5	55	31	0.2	5	162
GN.83721	GN 918.6-40-KVB-L-77	25	40	M6	12	24	20	77	100	8.5	10	30.5	55	31	0.2	5	164
GN.83722	GN 918.6-40-KVB-L-82	25	40	M6	12	24	20	82	100	8.5	10	30.5	55	31	0.2	5	166
GN.83731	GN 918.6-40-KVB-R-12	25	40	M6	12	24	20	12	100	8.5	10	30.5	55	31	0.2	5	152
GN.83732	GN 918.6-40-KVB-R-22	25	40	M6	12	24	20	22	100	8.5	10	30.5	55	31	0.2	5	154
GN.83733	GN 918.6-40-KVB-R-27	25	40	M6	12	24	20	27	100	8.5	10	30.5	55	31	0.2	5	155
GN.83734	GN 918.6-40-KVB-R-32	25	40	M6	12	24	20	32	100	8.5	10	30.5	55	31	0.2	5	156
GN.83735	GN 918.6-40-KVB-R-37	25	40	M6	12	24	20	37	100	8.5	10	30.5	55	31	0.2	5	157
GN.83736	GN 918.6-40-KVB-R-42	25	40	M6	12	24	20	42	100	8.5	10	30.5	55	31	0.2	5	158
GN.83737	GN 918.6-40-KVB-R-47	25	40	M6	12	24	20	47	100	8.5	10	30.5	55	31	0.2	5	159
GN.83738	GN 918.6-40-KVB-R-57	25	40	M6	12	24	20	57	100	8.5	10	30.5	55	31	0.2	5	161
GN.83739	GN 918.6-40-KVB-R-62	25	40	M6	12	24	20	62	100	8.5	10	30.5	55	31	0.2	5	161
GN.83740	GN 918.6-40-KVB-R-67	25	40	M6	12	24	20	67	100	8.5	10	30.5	55	31	0.2	5	162
GN.83741	GN 918.6-40-KVB-R-77	25	40	M6	12	24	20	77	100	8.5	10	30.5	55	31	0.2	5	164
GN.83742	GN 918.6-40-KVB-R-82	25	40	M6	12	24	20	82	100	8.5	10	30.5	55	31	0.2	5	166
GN.83951	GN 918.6-50-KVB-L-10	30	50	M8	16	28	24	10	116	10.5	12	34.5	62	36	0.2	5	253
GN.83952	GN 918.6-50-KVB-L-20	30	50	M8	16	28	24	20	116	10.5	12	34.5	62	36	0.2	5	256
GN.83953	GN 918.6-50-KVB-L-30	30	50	M8	16	28	24	30	116	10.5	12	34.5	62	36	0.2	5	259
GN.83954	GN 918.6-50-KVB-L-40	30	50	M8	16	28	24	40	116	10.5	12	34.5	62	36	0.2	5	263
GN.83955	GN 918.6-50-KVB-L-50	30	50	M8	16	28	24	50	116	10.5	12	34.5	62	36	0.2	5	267
GN.83956	GN 918.6-50-KVB-L-60	30	50	M8	16	28	24	60	116	10.5	12	34.5	62	36	0.2	5	270
GN.83957	GN 918.6-50-KVB-L-70	30	50	M8	16	28	24	70	116	10.5	12	34.5	62	36	0.2	5	275
GN.83958	GN 918.6-50-KVB-L-80	30	50	M8	16	28	24	80	116	10.5	12	34.5	62	36	0.2	5	278
GN.83959	GN 918.6-50-KVB-L-90	30	50	M8	16	28	24	90	116	10.5	12	34.5	62	36	0.2	5	282
GN.83960	GN 918.6-50-KVB-L-100	30	50	M8	16	28	24	100	116	10.5	12	34.5	62	36	0.2	5	286
GN.83971	GN 918.6-50-KVB-R-10	30	50	M8	16	28	24	10	116	10.5	12	34.5	62	36	0.2	5	253
GN.83972	GN 918.6-50-KVB-R-20	30	50	M8	16	28	24	20	116	10.5	12	34.5	62	36	0.2	5	256
GN.83973	GN 918.6-50-KVB-R-30	30	50	M8	16	28	24	30	116	10.5	12	34.5	62	36	0.2	5	259
GN.83974	GN 918.6-50-KVB-R-40	30	50	M8	16	28	24	40	116	10.5	12	34.5	62	36	0.2	5	263
GN.83975	GN 918.6-50-KVB-R-50	30	50	M8	16	28	24	50	116	10.5	12	34.5	62	36	0.2	5	267
GN.83976	GN 918.6-50-KVB-R-60	30	50	M8	16	28	24	60	116	10.5	12	34.5	62	36	0.2	5	270
GN.83977	GN 918.6-50-KVB-R-70	30	50	M8	16	28	24	70	116	10.5	12	34.5	62	36	0.2	5	275
GN.83978	GN 918.6-50-KVB-R-80	30	50	M8	16	28	24	80	116	10.5	12	34.5	62	36	0.2	5	278
GN.83979	GN 918.6-50-KVB-R-90	30	50	M8	16	28	24	90	116	10.5	12	34.5	62	36	0.2	5	282
GN.83980	GN 918.6-50-KVB-R-100	30	50	M8	16	28	24	100	116	10.5	12	34.5	62	36	0.2	5	286



Standard machine parts

- 1
- 2
- 3
- 4
- 5
- 6
- 7
- 8
- 9
- 10
- 11
- 12
- 13
- 14
- 15
- 16
- 17
- 18
- 19



Conversion Table
1 mm = 0,039 inch

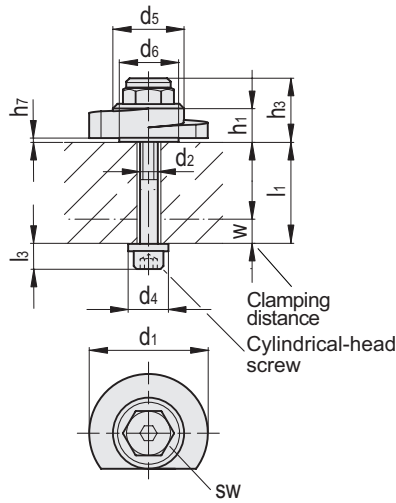
d3 - d1	
mm	inch
25	0.98
30	1.17
40	1.56
50	1.95

GN 918.6-GVB

INOX STAINLESS STEEL METRIC

Code	Description	d3	d1-0.5	d2	d4	d5	d6	l1 max	l2	l3	h1	h2	h5	h7	wmax	△
GN.83635	GN 918.6-40-GVB-L-12	25	40	M6	12	24	20	12	100	8.5	10	30.5	31	0.2	5	150
GN.83636	GN 918.6-40-GVB-L-22	25	40	M6	12	24	20	22	100	8.5	10	30.5	31	0.2	5	152
GN.83637	GN 918.6-40-GVB-L-27	25	40	M6	12	24	20	27	100	8.5	10	30.5	31	0.2	5	153
GN.83638	GN 918.6-40-GVB-L-32	25	40	M6	12	24	20	32	100	8.5	10	30.5	31	0.2	5	154
GN.83639	GN 918.6-40-GVB-L-37	25	40	M6	12	24	20	37	100	8.5	10	30.5	31	0.2	5	155
GN.83640	GN 918.6-40-GVB-L-42	25	40	M6	12	24	20	42	100	8.5	10	30.5	31	0.2	5	156
GN.83641	GN 918.6-40-GVB-L-47	25	40	M6	12	24	20	47	100	8.5	10	30.5	31	0.2	5	157
GN.83642	GN 918.6-40-GVB-L-57	25	40	M6	12	24	20	57	100	8.5	10	30.5	31	0.2	5	159
GN.83643	GN 918.6-40-GVB-L-62	25	40	M6	12	24	20	62	100	8.5	10	30.5	31	0.2	5	159
GN.83644	GN 918.6-40-GVB-L-67	25	40	M6	12	24	20	67	100	8.5	10	30.5	31	0.2	5	160
GN.83645	GN 918.6-40-GVB-L-77	25	40	M6	12	24	20	77	100	8.5	10	30.5	31	0.2	5	162
GN.83646	GN 918.6-40-GVB-L-82	25	40	M6	12	24	20	82	100	8.5	10	30.5	31	0.2	5	164
GN.83655	GN 918.6-40-GVB-R-12	25	40	M6	12	24	20	12	100	8.5	10	30.5	31	0.2	5	150
GN.83656	GN 918.6-40-GVB-R-22	25	40	M6	12	24	20	22	100	8.5	10	30.5	31	0.2	5	152
GN.83657	GN 918.6-40-GVB-R-27	25	40	M6	12	24	20	27	100	8.5	10	30.5	31	0.2	5	153
GN.83658	GN 918.6-40-GVB-R-32	25	40	M6	12	24	20	32	100	8.5	10	30.5	31	0.2	5	154
GN.83659	GN 918.6-40-GVB-R-37	25	40	M6	12	24	20	37	100	8.5	10	30.5	31	0.2	5	155
GN.83660	GN 918.6-40-GVB-R-42	25	40	M6	12	24	20	42	100	8.5	10	30.5	31	0.2	5	156
GN.83661	GN 918.6-40-GVB-R-47	25	40	M6	12	24	20	47	100	8.5	10	30.5	31	0.2	5	157
GN.83662	GN 918.6-40-GVB-R-57	25	40	M6	12	24	20	57	100	8.5	10	30.5	31	0.2	5	159
GN.83663	GN 918.6-40-GVB-R-62	25	40	M6	12	24	20	62	100	8.5	10	30.5	31	0.2	5	159
GN.83664	GN 918.6-40-GVB-R-67	25	40	M6	12	24	20	67	100	8.5	10	30.5	31	0.2	5	160
GN.83665	GN 918.6-40-GVB-R-77	25	40	M6	12	24	20	77	100	8.5	10	30.5	31	0.2	5	162
GN.83666	GN 918.6-40-GVB-R-82	25	40	M6	12	24	20	82	100	8.5	10	30.5	31	0.2	5	164
GN.83875	GN 918.6-50-GVB-L-10	30	50	M8	16	28	24	10	116	10.5	12	34.5	36	0.2	5	269
GN.83876	GN 918.6-50-GVB-L-20	30	50	M8	16	28	24	20	116	10.5	12	34.5	36	0.2	5	272
GN.83877	GN 918.6-50-GVB-L-30	30	50	M8	16	28	24	30	116	10.5	12	34.5	36	0.2	5	275
GN.83878	GN 918.6-50-GVB-L-40	30	50	M8	16	28	24	40	116	10.5	12	34.5	36	0.2	5	279
GN.83879	GN 918.6-50-GVB-L-50	30	50	M8	16	28	24	50	116	10.5	12	34.5	36	0.2	5	283
GN.83880	GN 918.6-50-GVB-L-60	30	50	M8	16	28	24	60	116	10.5	12	34.5	36	0.2	5	286
GN.83881	GN 918.6-50-GVB-L-70	30	50	M8	16	28	24	70	116	10.5	12	34.5	36	0.2	5	291
GN.83882	GN 918.6-50-GVB-L-80	30	50	M8	16	28	24	80	116	10.5	12	34.5	36	0.2	5	294
GN.83883	GN 918.6-50-GVB-L-90	30	50	M8	16	28	24	90	116	10.5	12	34.5	36	0.2	5	298
GN.83884	GN 918.6-50-GVB-L-100	30	50	M8	16	28	24	100	116	10.5	12	34.5	36	0.2	5	302
GN.83895	GN 918.6-50-GVB-R-10	30	50	M8	16	28	24	10	116	10.5	12	34.5	36	0.2	5	269
GN.83896	GN 918.6-50-GVB-R-20	30	50	M8	16	28	24	20	116	10.5	12	34.5	36	0.2	5	272
GN.83897	GN 918.6-50-GVB-R-30	30	50	M8	16	28	24	30	116	10.5	12	34.5	36	0.2	5	275
GN.83898	GN 918.6-50-GVB-R-40	30	50	M8	16	28	24	40	116	10.5	12	34.5	36	0.2	5	279
GN.83899	GN 918.6-50-GVB-R-50	30	50	M8	16	28	24	50	116	10.5	12	34.5	36	0.2	5	283
GN.83900	GN 918.6-50-GVB-R-60	30	50	M8	16	28	24	60	116	10.5	12	34.5	36	0.2	5	286
GN.83901	GN 918.6-50-GVB-R-70	30	50	M8	16	28	24	70	116	10.5	12	34.5	36	0.2	5	291
GN.83902	GN 918.6-50-GVB-R-80	30	50	M8	16	28	24	80	116	10.5	12	34.5	36	0.2	5	294
GN.83903	GN 918.6-50-GVB-R-90	30	50	M8	16	28	24	90	116	10.5	12	34.5	36	0.2	5	298
GN.83904	GN 918.6-50-GVB-R-100	30	50	M8	16	28	24	100	116	10.5	12	34.5	36	0.2	5	302

Standard machine parts



Conversion Table	
1 mm = 0.039 inch	
d3 - d1	
mm	inch
25	0.98
30	1.17
40	1.56
50	1.95

GN 918.6-SKB

INOX STAINLESS STEEL METRIC

Code	Description	d1 -0.5	d2	d4	d5	d6	l1 max	l3	h1	h3	h7	wmax	sw	⚖
GN.83795	GN 918.6-40-SKB-L-12	40	M6	12	24	20	12	8.5	10	24	0.2	5	15	68
GN.83796	GN 918.6-40-SKB-L-22	40	M6	12	24	20	22	8.5	10	24	0.2	5	15	70
GN.83797	GN 918.6-40-SKB-L-27	40	M6	12	24	20	27	8.5	10	24	0.2	5	15	71
GN.83798	GN 918.6-40-SKB-L-32	40	M6	12	24	20	32	8.5	10	24	0.2	5	15	72
GN.83799	GN 918.6-40-SKB-L-37	40	M6	12	24	20	37	8.5	10	24	0.2	5	15	73
GN.83800	GN 918.6-40-SKB-L-42	40	M6	12	24	20	42	8.5	10	24	0.2	5	15	74
GN.83801	GN 918.6-40-SKB-L-47	40	M6	12	24	20	47	8.5	10	24	0.2	5	15	75
GN.83802	GN 918.6-40-SKB-L-57	40	M6	12	24	20	57	8.5	10	24	0.2	5	15	77
GN.83803	GN 918.6-40-SKB-L-62	40	M6	12	24	20	62	8.5	10	24	0.2	5	15	77
GN.83804	GN 918.6-40-SKB-L-67	40	M6	12	24	20	67	8.5	10	24	0.2	5	15	78
GN.83805	GN 918.6-40-SKB-L-77	40	M6	12	24	20	77	8.5	10	24	0.2	5	15	80
GN.83806	GN 918.6-40-SKB-L-82	40	M6	12	24	20	82	8.5	10	24	0.2	5	15	82
GN.83815	GN 918.6-40-SKB-R-12	40	M6	12	24	20	12	8.5	10	24	0.2	5	15	68
GN.83816	GN 918.6-40-SKB-R-22	40	M6	12	24	20	22	8.5	10	24	0.2	5	15	70
GN.83817	GN 918.6-40-SKB-R-27	40	M6	12	24	20	27	8.5	10	24	0.2	5	15	71
GN.83818	GN 918.6-40-SKB-R-32	40	M6	12	24	20	32	8.5	10	24	0.2	5	15	72
GN.83819	GN 918.6-40-SKB-R-37	40	M6	12	24	20	37	8.5	10	24	0.2	5	15	73
GN.83820	GN 918.6-40-SKB-R-42	40	M6	12	24	20	42	8.5	10	24	0.2	5	15	74
GN.83821	GN 918.6-40-SKB-R-47	40	M6	12	24	20	47	8.5	10	24	0.2	5	15	75
GN.83822	GN 918.6-40-SKB-R-57	40	M6	12	24	20	57	8.5	10	24	0.2	5	15	77
GN.83823	GN 918.6-40-SKB-R-62	40	M6	12	24	20	62	8.5	10	24	0.2	5	15	77
GN.83824	GN 918.6-40-SKB-R-67	40	M6	12	24	20	67	8.5	10	24	0.2	5	15	78
GN.83825	GN 918.6-40-SKB-R-77	40	M6	12	24	20	77	8.5	10	24	0.2	5	15	80
GN.83826	GN 918.6-40-SKB-R-82	40	M6	12	24	20	82	8.5	10	24	0.2	5	15	82
GN.84026	GN 918.6-50-SKB-L-10	50	M8	16	28	24	10	10.5	12	24	0.2	5	19	129
GN.84027	GN 918.6-50-SKB-L-20	50	M8	16	28	24	20	10.5	12	24	0.2	5	19	131
GN.84028	GN 918.6-50-SKB-L-30	50	M8	16	28	24	30	10.5	12	24	0.2	5	19	135
GN.84029	GN 918.6-50-SKB-L-40	50	M8	16	28	24	40	10.5	12	24	0.2	5	19	139
GN.84030	GN 918.6-50-SKB-L-50	50	M8	16	28	24	50	10.5	12	24	0.2	5	19	143
GN.84031	GN 918.6-50-SKB-L-60	50	M8	16	28	24	60	10.5	12	24	0.2	5	19	146
GN.84032	GN 918.6-50-SKB-L-70	50	M8	16	28	24	70	10.5	12	24	0.2	5	19	151
GN.84033	GN 918.6-50-SKB-L-80	50	M8	16	28	24	80	10.5	12	24	0.2	5	19	154
GN.84034	GN 918.6-50-SKB-L-90	50	M8	16	28	24	90	10.5	12	24	0.2	5	19	158
GN.84035	GN 918.6-50-SKB-L-100	50	M8	16	28	24	100	10.5	12	24	0.2	5	19	162
GN.84046	GN 918.6-50-SKB-R-10	50	M8	16	28	24	10	10.5	12	24	0.2	5	19	129
GN.84047	GN 918.6-50-SKB-R-20	50	M8	16	28	24	20	10.5	12	24	0.2	5	19	131
GN.84048	GN 918.6-50-SKB-R-30	50	M8	16	28	24	30	10.5	12	24	0.2	5	19	135
GN.84049	GN 918.6-50-SKB-R-40	50	M8	16	28	24	40	10.5	12	24	0.2	5	19	139
GN.84050	GN 918.6-50-SKB-R-50	50	M8	16	28	24	50	10.5	12	24	0.2	5	19	143
GN.84051	GN 918.6-50-SKB-R-60	50	M8	16	28	24	60	10.5	12	24	0.2	5	19	146
GN.84052	GN 918.6-50-SKB-R-70	50	M8	16	28	24	70	10.5	12	24	0.2	5	19	151
GN.84053	GN 918.6-50-SKB-R-80	50	M8	16	28	24	80	10.5	12	24	0.2	5	19	154
GN.84054	GN 918.6-50-SKB-R-90	50	M8	16	28	24	90	10.5	12	24	0.2	5	19	158
GN.84055	GN 918.6-50-SKB-R-100	50	M8	16	28	24	100	10.5	12	24	0.2	5	19	162

- 1
- 2
- 3
- 4
- 5
- 6
- 7
- 8
- 9
- 10
- 11
- 12
- 13
- 14
- 15
- 16
- 17
- 18
- 19

Standard machine parts